

NM Scott Massey-NM Mark Kernighan

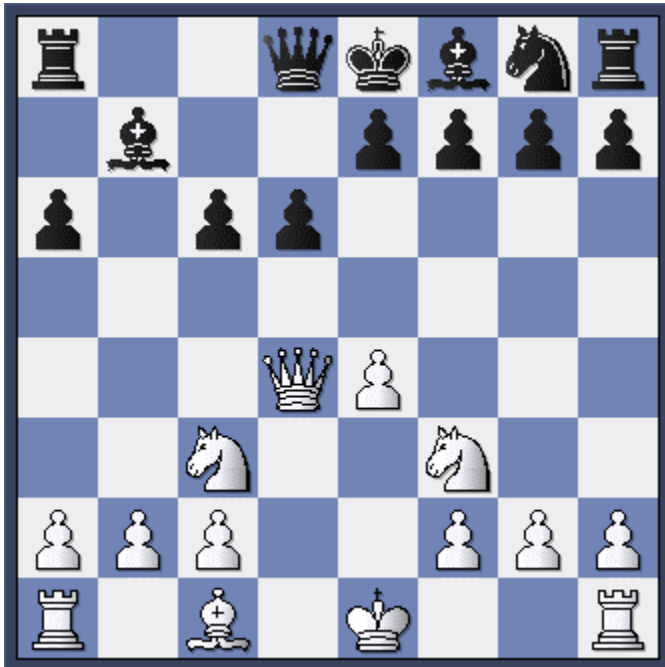
Round 11, March 31, 2005
2005 Kenilworth Chess Club Championship
Kenilworth, NJ

1.e4 c5 2.Nc3 Nc6 3.Bb5 d6?! 4.d4!?

An alternative, 4.Bxc6+ bxc6 5.d3, appears to give White a good version of the Grand Prix Attack, where he has play against the doubled c-pawns.

4...cxd4 5.Qxd4 a6! 6.Bxc6+ bxc6 7.Nf3 Bb7?!

7...Nf6 8.0-0 (8.e5 Ng4) 8...Bg4 is a speedier and more active way to develop for Black.



Position after 7...Bb7

8.Bg5!? Nf6?!

This seems to play directly into White's plans. It seems best to immediately challenge the Bishop with 8...h6 9.Be3 c5 10.Qc4 Nf6 11.0-0 Qb6 =

9.0-0-0 Nd7?! 10.e5 d5

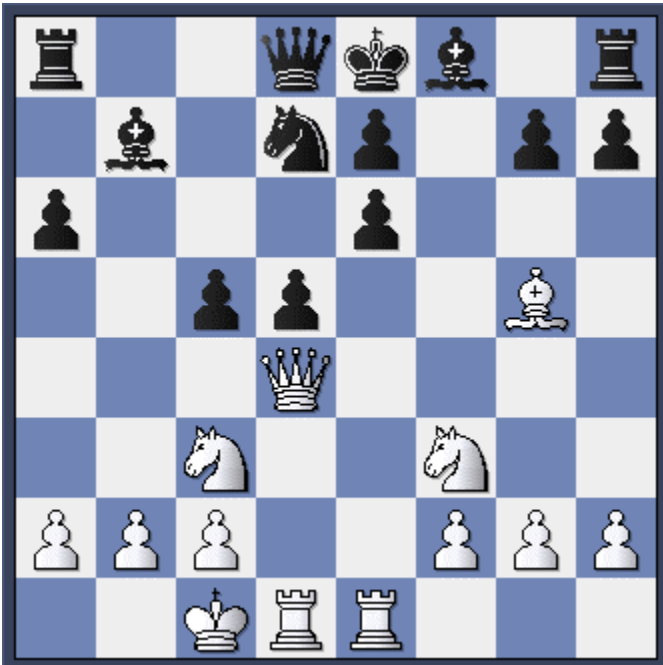
This allows the rather standard response that follows, but Black is already in a bad way and very far behind in development. White gets a strong attack against the more active 10...c5 11.Qa4 Bxf3 12.gxf3 h6 13.exd6! hxg5 14.Nd5 Rh4 15.c4 Ra7 16.dxe7 Bxe7 17.Rhe1 Kf8 18.Rxe7 Rxh2 19.Rde1.



Position after 10....d5

11.e6! fxe6 12.Rhe1 c5

White has gotten a wonderful position with his pawn sacrifice. Now he should try to exploit Black's weakness on the h5-e8 diagonal.



Position after 12....c5

13.Qa4?!

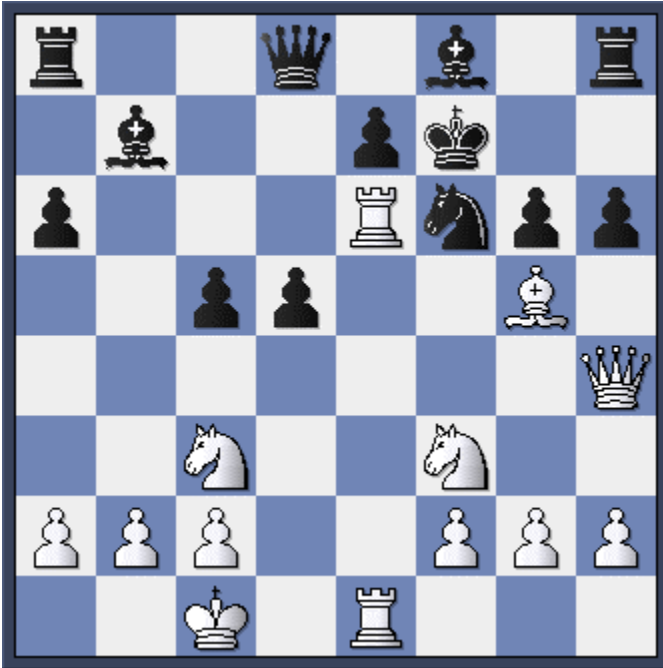
White can create a winning attack immediately with 13.Qg4! d4 14.Rxe6!! dxc3 15.Qh5+ g6 16.Rxg6!

13...h6?!

Better to block the White Queen's access to the kingside with 13...d4! 14.Ne5 Bxg2 and he might just hold on.

14.Qh4! g6 15.Rxe6! Kf7 16.Rde1 Nf6

White has a strong attack. How best is he to break through?



Position after 16...Nf6

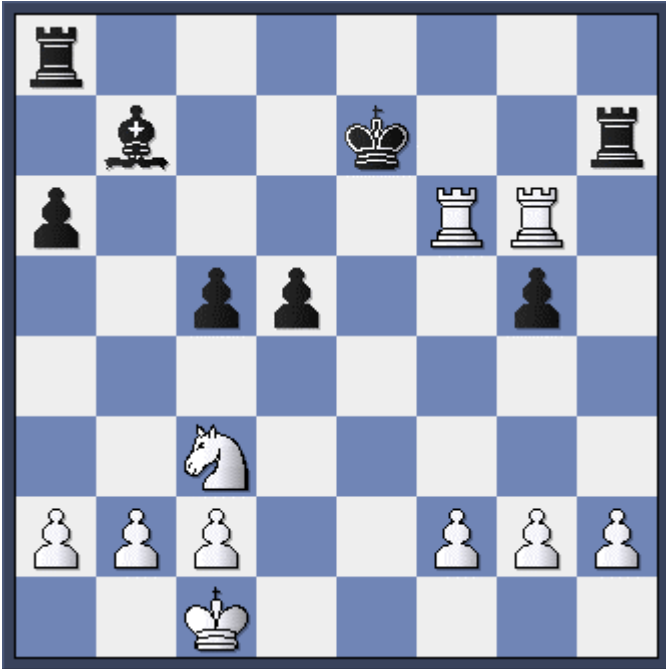
17.Ne5+!! Kg8

17...Kxe6? 18.Qh3+! Kd6 19.Nf7+- wins the Queen.

18.Bxf6 exf6 19.Nxg6 Rh7 20.Nxf8 Qxf8 21.Rxf6 Qg7 22.Ree6

White should probably keep the Queens on with 22.Rf5! to exploit Black's King position. But with two extra pawns, he should win the endgame without difficulty.

22...Qg5+ 23.Qxg5+ hxg5 24.Rg6+ Kf7 25.Ref6+ Ke7



Position after 25....Ke7

26.Rb6 Ra7 27.Rxg5 d4 28.Ne2 Kd8 29.h3 Kc7 30.Rf6 Kd8 31.f3 Rc7 32.Rg8+ Ke7 33.Rg7+ Kxf6 34.Rxc7 Ke5 35.Rxc5+ Kd6 36.Rg5 Bd5 37.Nxd4 Ra8 38.b3 Bb7 39.c4 Re8 40.Kd2 Rf8 41.c5+ Kd7 42.c6+ Bxc6 43.Rg7+ Kd6 44.Rg6+

1-0