

FM Steve Stoyko - NM Scott Massey

Round 10

King's Indian Defense [E94]

Kenilworth Chess Club Championship, Kenilworth, NJ USA

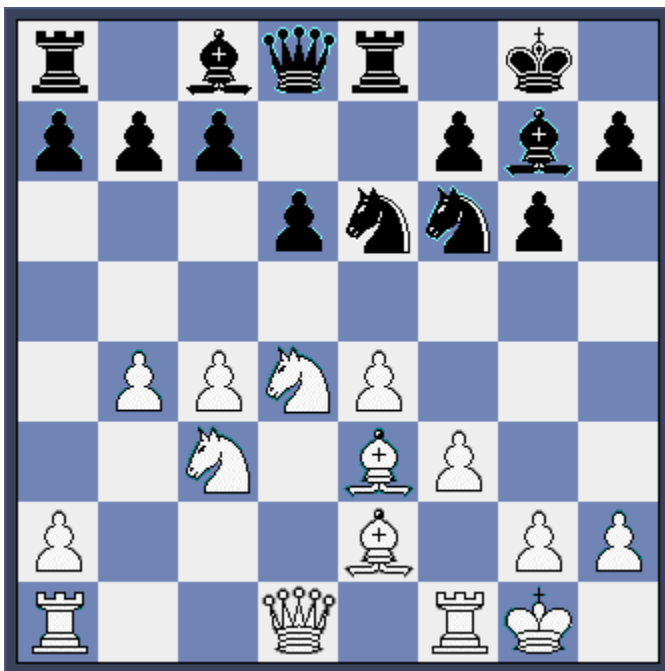
March 24, 2005

Annotated by Michael Goeller, based on comments by the participants

1.d4 d6 2.c4 Nf6 3.Nc3 g6 4.e4 Bg7 5.Nf3 0-0 6.Be2 e5 7.0-0 exd4

More common is 7...Nc6 8.d5 Ne7 leading to the Mar del Plata variation, where the book variations can run to 30 moves or more. Scott realized that Steve would have had an edge in those lines.

8.Nxd4 Re8 9.f3 Nbd7 10.Be3 Nc5 11.b4 Ne6



Position after 11...Ne6

12.Rc1!

Getting the Rook off of the vulnerable a1-h8 diagonal and protecting the potentially loose Knight at c3. White also has ambitions of opening the c-file or advancing the c-pawn supported by the Rook. Stoyko points out that 12.Qd2?! is "practically a blunder" due to 12...Nxd4! 13.Bxd4 c5!= with easy equality.

12...Bd7 13.Nb3

White avoids exchanges and prepares to support his Queenside attack.

13...b6

Black fights for control of c5 but creates potential weaknesses on the light squares -- especially c6. Now on Nd5 Black will not be able to exchange without opening the c-file by cxd5, giving White tremendous pressure on the critical pawn at c7.

14.Qd2 Bc6 15.Nd5 Nd7 16.Nd4

White has such a dominant position that he can consider opening up on the Kingside with 16.f4!? (threatening f5) 16...Nef8 17.Bf3 (17.Nd4!?) 17...Bb7 18.a4 and White has gained a lot of space.

16...Bb7 17.Rfd1 a5 18.a3 axb4 19.axb4 Ra3?!

Creating potential exchange threats against the Bishop at e3 while considering the idea of doubling on the a-file. But the Rook is soon driven back. Perhaps better 19...Be5!

a) 20.f4?! Bxd4 21.Bxd4 Nxd4 22.Qxd4 c5! 23.bxc5 bxc5 24.Qd3 Bxd5 25.cxd5 (25.Qxd5 Nf6!) 25...Qe7=

b) 20.Bf2!? c5!

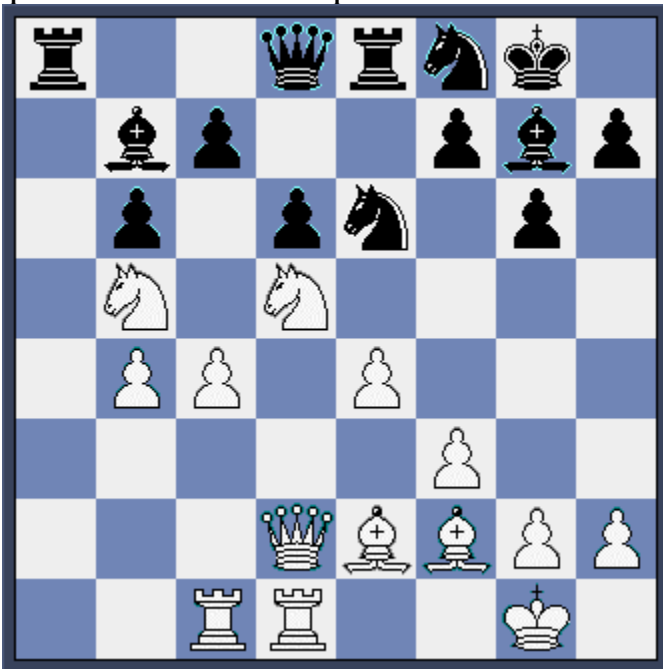
c) 20.Nxe6 fxe6 21.Bg5 Qb8 (21...Nf6 22.Nxf6+ Bxf6 23.Bxf6 Qxf6 24.c5 +=) 22.Ne3!? Qa7!? unclear

20.Bf2

The immediate 20.Nb5! Rb3!? 21.Rc2 leaves the Rook precariously placed but may be less clear.

20...Ndf8

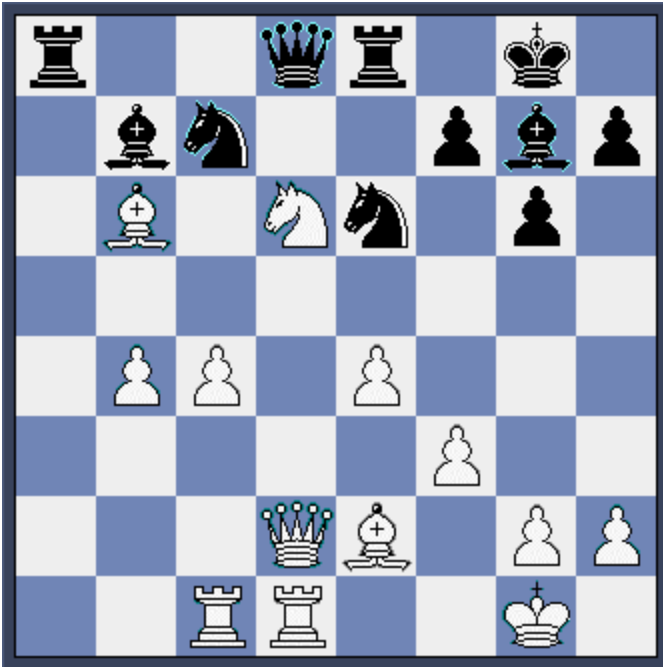
Black may have to try something like 20...Be5!? 21.Nb5 Rb3!? Now White gets a tremendous queenside initiative with a piece sacrifice that creates powerful passed pawns.



Position after 21....Ra8

21.Nb5! Ra8 22.Ndxc7!! Nxc7 23.Bxb6 Nfe6 24.Nxd6!

Also worth considering was 24.Bxc7 Nxc7 25.Nxd6 Rf8 26.c5! (but not 26.Nxb7?! Qxd2 27.Rxd2 Bh6 28.Rcd1 Bxd2 29.Rxd2 Rfb8 30.Nd6 Rxb4 unclear)



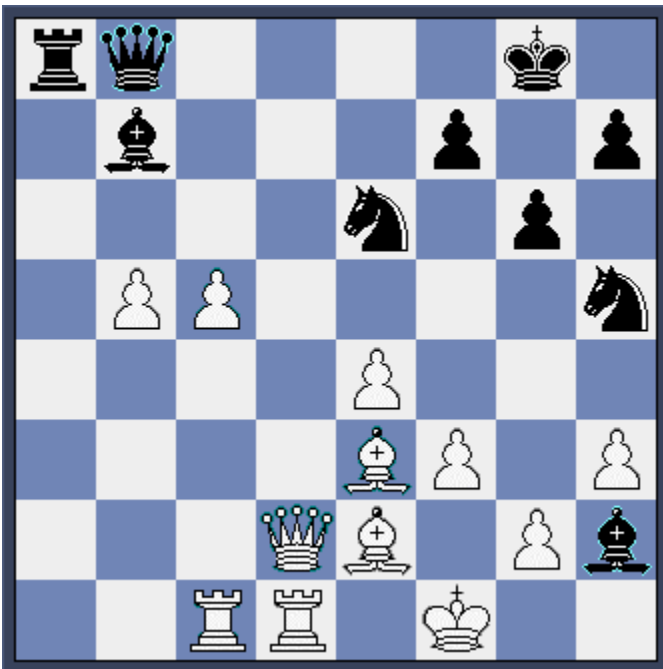
Position after 24.Nxd6

24...Qb8!?

Scott gives up the exchange, perhaps with the idea of using the b8-h2 diagonal to create some threats against White's King. Stoyko thought the best try was 24...Re7!? 25.c5! (again if 25.Nxb7?! Qxd2! 26.Rxd2 Bh6! 27.Rcd1 Bxd2 28.Rxd2 Ra1+! 29.Kf2 Na8! 30.Be3 Rxb7 unclear, and it is tough to believe that the pawns are worth a Rook, though Fritz seems to think so) 25...Qb8 26.f4! and White's attack continues but the position seems more balanced.

25.Nxe8 Nxe8 26.Be3! Be5 27.h3 N8g7 28.b5 Nh5 29.c5 Bh2+ 30.Kf1

Not 30.Kh1?? Ng3+ 31.Kxh2 Nxe4+ winning the Queen. But now Scott uncorks a surprising sacrifice.



Position after 30.Kf1

30...Bxe4!

A fascinating idea, which Scott seems to have considered practically desperation, since he played it mostly on intuition. Though White should probably still win, the move creates many chances for him to go wrong.

31.Ra1?!

This gets White into some troubles, though only in ways that a computer might figure out. After the game, Scott and Steve looked at accepting the Bishop sacrifice by 31.fxe4 Ng3+ 32.Ke1 (32.Kf2?? Nxe4+-) 32...Nxe4 33.Qd3 Qg3+ 34.Kf1 Qh4!! 35.Bg4 (35.Rd2 Rd8!) 35...Ng3+ 36.Ke1 Ra2!! and Black's threats look terrible.



Possible position if Steve takes the Bishop sac, after 36....Ra2!!

Fritz and Junior suggest a likely draw, however, after 37.Rc2! Ne4+! (37...Rxc2!?) 38.Kf1! (38.g3!? Qxg3+ 39.Kf1 N4xc5! unclear) 38...Ng3+ = with perpetual check. I'm sure it just did not look appealing to Stoyko, who no doubt rejected it intuitively after examining a few lines. Steve was therefore correct to decline the sacrifice, but the best way was by pushing his pawns: 31.c6! Ng3+ 32.Ke1 Nxe2 33.Qxe2 Bf5 34.b6! +- and the pawns should triumph here. In any event, 31.Ra1?! is not best.



Position after 31.Ra1?!

31...Rxa1?!

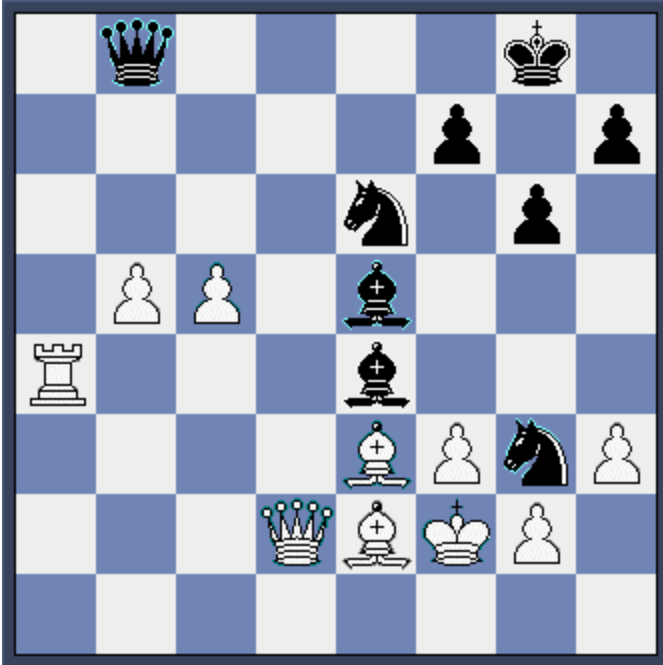
Black misses an important finesse in first 31...Ng3+! 32.Ke1 (32.Kf2? Nh1+!! = since 33.Rxh1?? Qg3+ 34.Kf1 Rxa1+ --) 32...Rxa1 33.Rxa1 Nxe2 34.Qxe2 (34.fxe4? Be5 35.Ra3 N2d4) 34...Qe5 and Black's initiative seems to be enough for at least a draw: 35.Ra4 (35.Ra3 Nd4 36.Bxd4 Qxd4 37.fxe4 Qb4+ 38.Qd2 Qxa3 39.Qd8+ Kg7 40.Qd4+ =) 35...Nxc5! 36.Bxc5 Bg3+ 37.Kd2 Qb2+ 38.Ke3 Bf4+ 39.Kf2 Bg3+ 40.Ke3 Bf4+ =

32.Rxa1 Be5

This position is quite complicated and Black seems to have a lot of counterplay. Worth considering is 32...Qe5!? 33.Ra4!? (33.Rc1 Ng3+ 34.Ke1 (34.Kf2 Nf5 unclear) 34...Bf5 35.Qc3! unclear) 33...Ng3+ 34.Kf2 Nxc5 35.Rc4 Nb7 unclear

33.Ra4 Ng3+ 34.Kf2?!

To guarantee the win, White must play 34.Kg1! Bc3 35.Qd1 Bd5!? (35...Bb7 36.c6 Qe5 37.Qd3) 36.Qxd5! (36.c6?! Qe5!) 36...Nxe2+ 37.Kf2 Qg3+ 38.Kxe2 Qe1+ 39.Kd3 Qd1+ 40.Kc4 Qxa4+ 41.Kxc3 Qa5+!? 42.Kd3 Qxb5+ 43.Kc3± and White's extra pawn gives him a winning ending.



Position after 34.Kf2?!

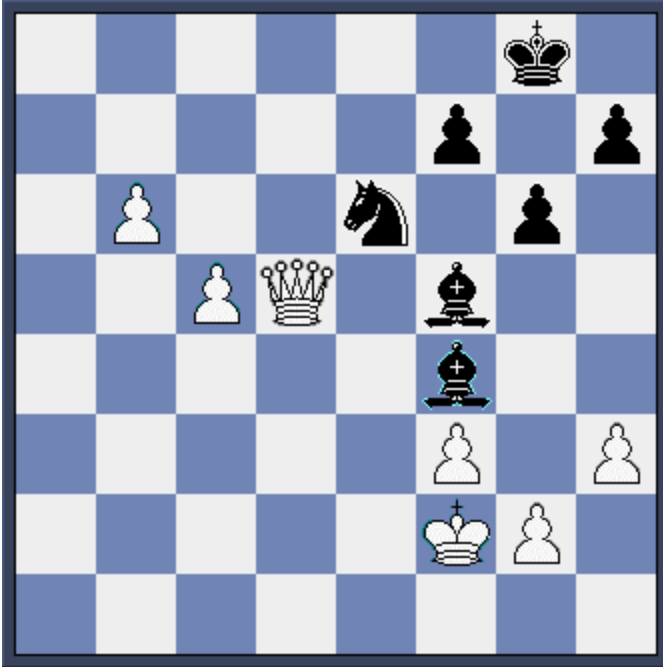
34...Bf5?

The losing move! Hard as it is to believe, Black could likely still equalize with 34...Nxe2!

a) 35.Qxe2 Bc6! 36.Rb4 (36.bxc6?! Bg3+ 37.Kg1 Qb1+ 38.Qf1 Bh2+ 39.Kxh2 Qxf1 40.Bh6 f6 41.Ra8+ Kf7 42.Ra7+ Ke8 43.Ra8+ =) 36...Nc7!?=

b) 35.Rxe4 Nc3! 36.Rxe5 Qxe5 37.b6 Na4 38.c6 Nxb6! 39.Bxb6 Qb5! =

35.Qd5! Nxe2 36.Ra8 N2f4 37.Rxb8+ Bxb8 38.Bxf4 Bxf4 39.b6 +-
and Black lost on time....



Final position after 39.b6!

For pictures of the participants, see the [Photos](#) section of the site.

1-0